

# MONTHLY MEMBERSHIP PROGRESS REPORT

LOCATION INDIA

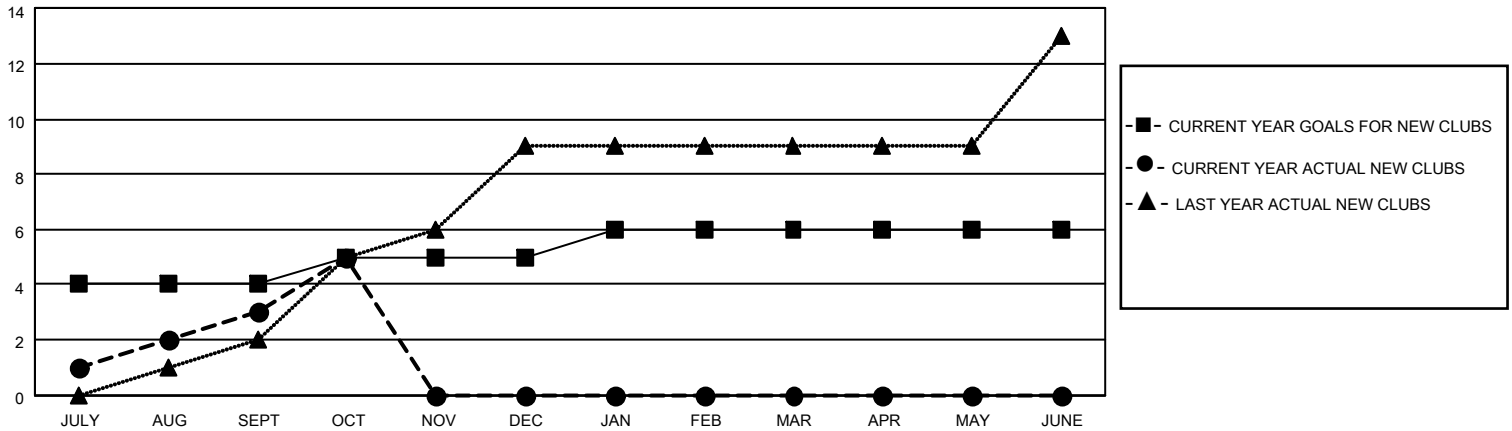
District 320 F

Results as of: 10/31/2021

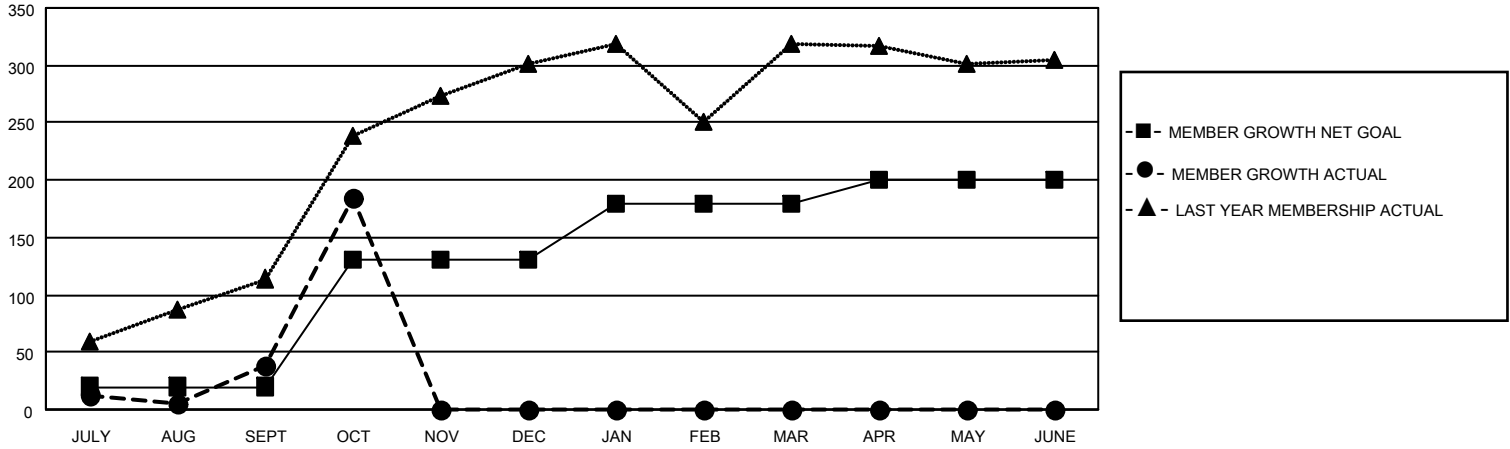
Clubs			
RESULTS FOR 2021-2022			
QUARTER	NEW CLUB GOAL	NEW CLUBS	DROPPED CLUBS
JULY/AUG/SEPT	4	3	1
OCT/NOV/DEC	1	2	0
JAN/FEB/MAR	1	0	0
APR/MAY/JUNE	0	0	0

Members			
RESULTS FOR 2021-2022			
QUARTER	MEMBER GROWTH NET GOAL	MEMBER GROWTH ACTUAL	DROPPED MEMBERS ACTUAL (including transfers)
JULY/AUG/SEPT	20	129	84
OCT/NOV/DEC	110	150	2
JAN/FEB/MAR	50	0	0
APR/MAY/JUNE	20	0	0

**GOALS AND ACTUAL NEW CLUBS CUMULATIVE**



**GOALS AND ACTUAL MEMBERS CUMULATIVE**



**DROPPED CLUBS: 1**

**38 CLUBS OF 85 ADDED 1 OR MORE NEW MEMBERS**

**GENDER DISTRIBUTION**

MALE	2,223 (77.11%)
FEMALE	660 (22.89%)
NON BINARY	0 (0.00%)
PREFER NOT TO ANSWER	0 (0.00%)

**DROPPED MEMBERS**

DECEASED	1
CLUB CANCELLED	34
OTHER	51
<b>TOTAL</b>	<b>86</b>

[CLICK HERE FOR CUMULATIVE MEMBERSHIP DATA](#)

TOTAL FAMILY UNIT MEMBERS 1,066

FAMILY MEMBERS PAYING HALF DUES 621